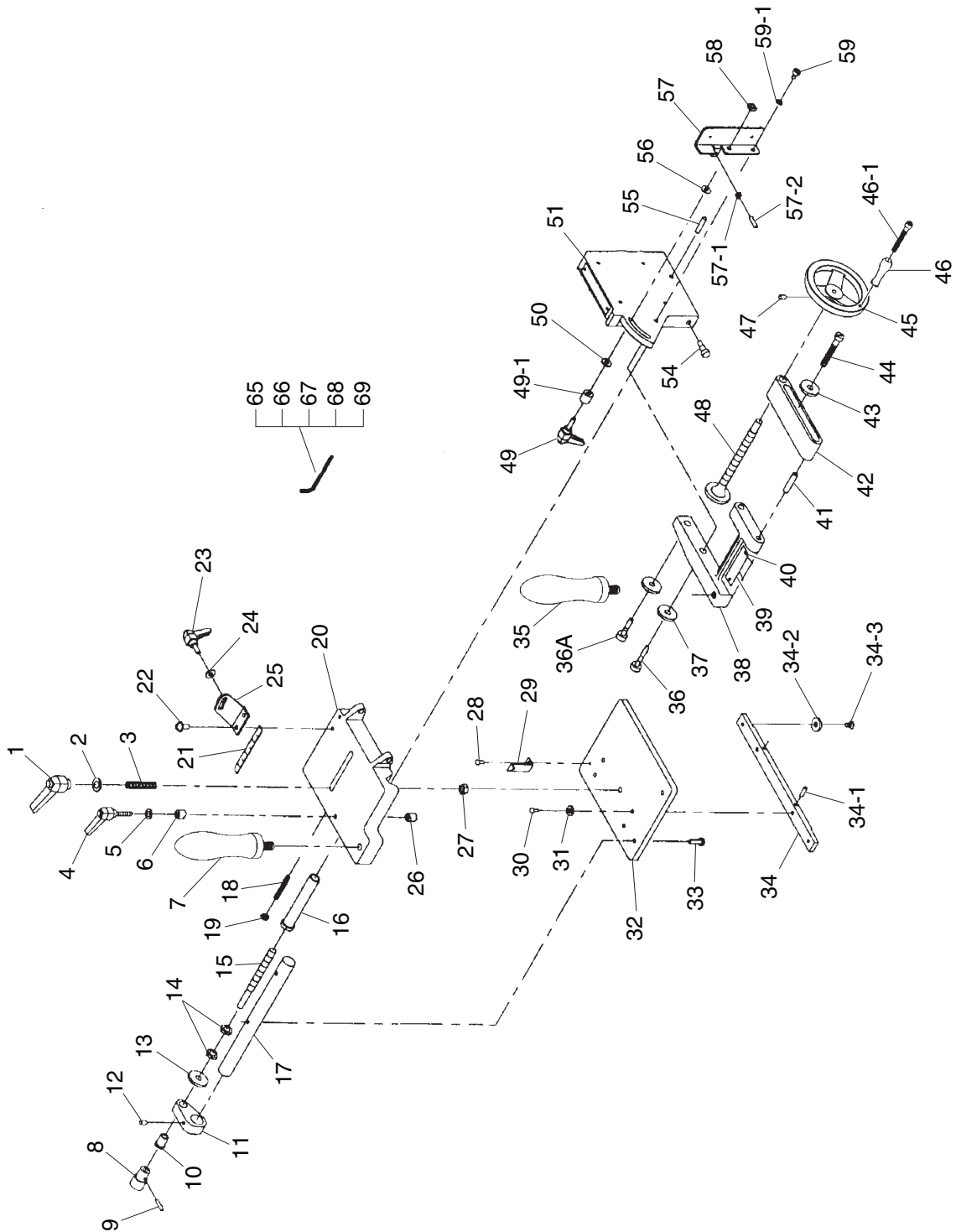


# SECTION 6: PARTS

## Parts Breakdown



# Parts List

REF	PART #	DESCRIPTION
1	PH7583001	LOCK LEVER M8-1.25
2	PH7583002	SPECIAL WASHER 15/16" OD
3	PSS102M	SET SCREW M8-1.25 X 55
4	PH7583004	LOCK LEVER M6-1 X 28
5	PW03M	FLAT WASHER 6MM
6	PH7583006	LOCK BUSHING
7	PH7583007	HANDLE M10-1.5 X 20
8	PH7583008	KNURLED KNOB 10MM PINNED
9	PRP42M	ROLL PIN 3 X 20
10	PH7583010	BUSHING
11	PH7583011	MICRO-ADJUST COLLAR
12	PSS01M	SET SCREW M6-1 X 10
13	PH7583013	NYLON WASHER 10MM
14	PN02M	HEX NUT M10-1.5
15	PH7583015	THREADED SHAFT M10-1.5 X 116
16	PH7583016	GUIDE BUSHING
17	PH7583017	GUIDE ROD
18	PSS85M	SET SCREW M6-1 X 45
19	PN01M	HEX NUT M6-1
20	PH7583020	SLIDE PLATE
21	PH7583021	SCALE
22	PS09M	PHLP HD SCR M5-.8 X 10
23	PH7583004	LOCK LEVER M6-1 X 28
24	PW03M	FLAT WASHER 6MM
25	PH7583025	BRACKET
26	PH7583026	LOCK BUSHING M6-1
27	PN03M	HEX NUT M8-1.25
28	PS07M	PHLP HD SCR M4-.7 X 8
29	PH7583029	POINTER
30	PSBS05M	BUTTON HD CAP SCR M6-1 X 20
31	PLW03M	LOCK WASHER 6MM
32	PH7583032	BASE PLATE
33	PSBS05M	BUTTON HD CAP SCR M6-1 X 20
34	PH7583034	GUIDE BAR
34-1	PSS34M	SET SCREW M5-.8 X 16
34-2	PH7583034-2	T-SLOT WASHER

REF	PART #	DESCRIPTION
34-3	PH7583034-3	FLAT HD SCR 1/4-28 X 5/16
35	PH7583007	HANDLE M10-1.5 X 20
36	PSB64M	CAP SCREW M10-1.5 X 25
36A	PSB61M	CAP SCREW M10-1.5 X 20
37	PLW06M	LOCK WASHER 10MM
38	PH7583038	CLAMP BRACKET
39	PH7583039	WARNING LABEL
40	PH7583040	RIVET 2 X 4
41	PH7583041	ROLL PIN 3/8" X 2"
42	PH7583042	CLAMP ARM
43	PW01M	FLAT WASHER 8MM
44	PSB05M	CAP SCREW M8-1.25 X 50
45	PH7583045	HANDWHEEL
46	PH7583046	HANDWHEEL HANDLE
46-1	PH7583046-1	SPECIAL SCREW M6-1 X 55
47	PSS03M	SET SCREW M6-1 X 8
48	PH7583048	CLAMP SHOE
49	PH7583004	LOCK LEVER M6-1 X 28
49-1	PH7583006	LOCK BUSHING
50	PW03M	FLAT WASHER 6MM
51	PH7583051	SIDE SUPPORT
54	PH7583054	SHOULDER SCREW M6 X 20
55	PSS12M	SET SCREW M6-1 X 25
56	PW03M	FLAT WASHER 6MM
57	PH7583057	BACK SUPPORT
57-1	PN06M	HEX NUT M5-.8
57-2	PSS57M	SET SCREW M5-.8 X 20
58	PSN02M	SQUARE NUT M6-1
59	PH7583059	SPECIAL SLOT SCREW M5-.8 X 10
59-1	PH7583059-1	WAVY WASHER 6MM
65	PAW03M	HEX WRENCH 3MM
66	PAW04M	HEX WRENCH 4MM
67	PAW06M	HEX WRENCH 6MM
68	PAW08M	HEX WRENCH 8MM
69	PAW02.5M	HEX WRENCH 2.5MM

